



PROFESSIONAL

PROFESSIONAL

Strong and Fast

Crystal Drain Opener

An alkaline drain opener that uses heat activation to liquefy, dissolve and loosen all types of clogs found in drain and sewer lines including hair, soap scum, paper, organic matter and greases. When added to water the turbulence and heat release acts as a mechanical cleaning action to loosen obstructions in pipes.

Benefits:

- Versatile
- Safe for use on all pipes and septic systems
- An ideal substitute for Sulfuric Acid based drain openers
- Non-acid; Non-fuming; No offensive odors or fumes
- May be used on metal pipes and fittings and vitreous china or porcelain.
- Use as a corrective and preventive drain maintenance chemical

Applications:

- Amusement & Recreation Parks
- Eating & Drinking Establishments
- Schools & Educational Services
- Child Day Care Services
- Hotels & Motels
- Service Stations
- Cleaning and Maintenance Services
- Nursing Homes & Hospitals
- Sports & Recreation Clubs

Directions for Use:

1. Remove as much standing water as possible from sink or tub. Make sure water in drain is cool. 2. Slowly pour 1 heaping tablespoon of Crystal Heat Drain Opener directly into drain. Do not allow product to contact any sink or tub surface or fixture. Damage may occur. 3. Add 1 cup of cold water to drain. Immediately cover drain opening with a bowl to avoid splash back. Do not completely seal, as pressure can build up. 4. Once drain has cleared, flush with cold water. 5. If drain remains clogged, repeat steps 1-5. Avoid physical contact with standing water in sink from the first application, as burns may occur. 6. If after two treatments the drain remains clogged, consult a plumber.



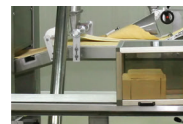
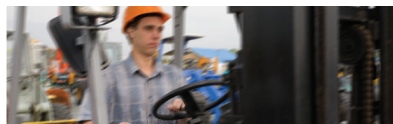
Base Code: R373

Companion Products:

	Base Code
Biological Drain Maintainer	R026
Disinfectant Acid Bowl Cleaner	R001
Non-Acid Deodorizing Toilet Bowl Cleaner	R003



1-877-7ZEPPRO | www.zepprofessional.com



Specifications:

Physical Form	Solid
Odor	Odorless
Color	Light blue
pH	12.5-13.0 (1% Solution)
Solubility	Soluble in cold water and hot water



Packaging Information:

SKU	Package Quantity	Weight (lbs)	Length (")	Height (")	Width (")
R37301	12 11lb canisters/cs	18	12.70	10	9.6

Safety:

Please make sure you have read and understand the product label and MSDS before using this product. MSDSs are available at www.zepprofessional.com. Avoid breathing vapors, spray or mists. Use only with adequate ventilation. Keep container closed. Wash thoroughly after handling. Wash contaminated clothing before reusing. Observe label precautions.

